

# TRAINER'S CHOICE



Athletics

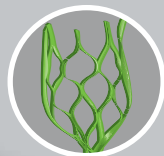


## PROPERTY

Primary/Stalk Yarn Polymer  
Secondary/Thatch Yarn Polymer  
Yarn Cross Section  
Standard Colors  
UV Stabilized  
Fabric Construction  
Primary Backing  
Coating Type(s)  
Perforations  
Recommended Infill  
Pile Height  
Total Weight  
ISO 9001 Quality Assured  
Roll Width  
Blades Per Sq. Ft.  
Warranty  
Yarn Type

## DESCRIPTION

Polyethylene  
Nylon  
Polyethylene Slit Film/ Texturized Nylon  
Field Green; White; Red; FLA Blue; Black; Silver  
Yes  
Tufted  
Dual Layered Woven Polypropylene  
5mm Polyurethane Foam w/Fleece; SilverBack™ Polyurethane  
Custom Only  
N/A  
3/4"  
125 oz. (Foam)  
67 oz. (SilverBack™)  
Yes  
12 & 15 Ft.  
4224 blades/sq. ft.  
5 Year  
Slit-film



## ADVANTAGES

- Perfect for training
- High performance quality
- Reacts naturally
- Improved durability and safety
- Helps create multipurpose facilities
- Virtually maintenance free
- Clean and can be cleaned easily
- Consistent performance over time and use

### Standard Line and Field Colors\*

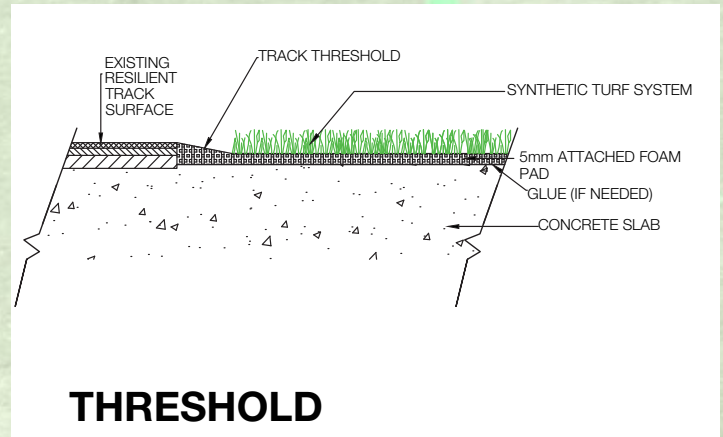
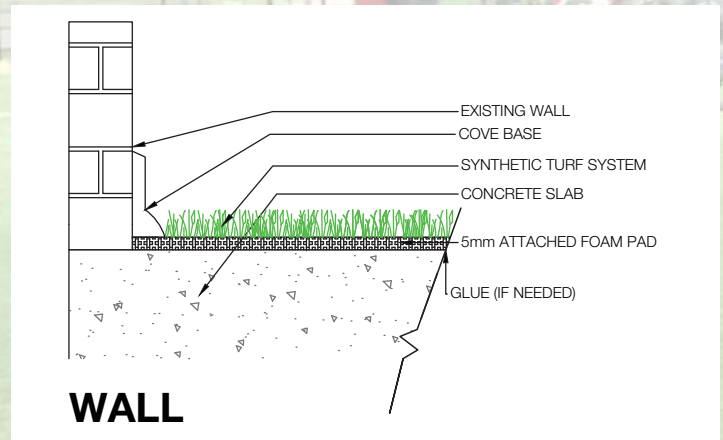
\*Custom colors available upon request



# TRAINER'S CHOICE

## BENEFITS

This non-rubber infilled turf has all the advantages of previous generations and performs even higher in wear and resistance tests. The blend of nylon and polyethylene is an almost perfect 50/50 combination. This gives you the true ball roll of a traditional nylon field, with the softness of the new generation rubber-filled turf. No rubber infill makes maintenance easier, and up to 10% cooler. These systems can also be portable with added 4" or 8" velcro.



It is the policy of Synthetic Turf International to continuously improve their line of products. Therefore, Synthetic Turf International reserves the right to change, modify or discontinue systems, specifications and accessories of all products at any time without notice or obligation to purchaser. These are standard specifications subject to manufacturing tolerances and consumer requests.